

Tempus II Retro-Fit Valve Information

The following section deals with the retrofit of existing fixture valves. The Metcraft TEMPUS II valve was discontinued in 1993. This valve was manufactured for Metcraft and the manufacturer is no longer a viable source for repair parts or valve components. Metcraft offers two retrofit cartridges for this valve.

PART NO. #19811 NON-METERING CARTRIDGE KIT

This cartridge has been adapted to provide a relatively inexpensive non-metering cartridge for the Tempus II valves. When this cartridge is used, it is necessary to utilize the looped operating lever assembly and cap nut from the old brass Tempus cartridge being replaced, along with the existing push rods and push rod ends. New operating levers, push rods and push rod ends are no longer available.

The old Tempus II valve received a minor change in its casting during its last few years of production. This change made the opening at the top of the cartridge bore slightly larger than the previous casting. As a result, the older castings will not accept the #19811 retro-fit cartridge until the upper "O" ring is moved against the small rim at the top of the cartridge. Once this is done, the retro-fit cartridge can be pushed down into the body. The rim at the top of the cartridge compresses the upper "O" ring of the cartridge against the valve body forming the upper seal. It is important that when the cap nut is screwed onto the valve body, it is not tightened to the point where it shears this "O" ring. Only very moderate tightening is required to seal the cartridge.

PART NO. 30033S PNEUMATIC METERING CARTRIDGE

This cartridge was developed to provide a replacement for the old brass metering cartridges originally used for the TEMPUS II valve. When this cartridge is chosen, it is necessary to convert the pushbuttons for pneumatic operation of the cartridge. The existing mechanical push rods and push rod ends are removed and replaced with a push button adapter kit.

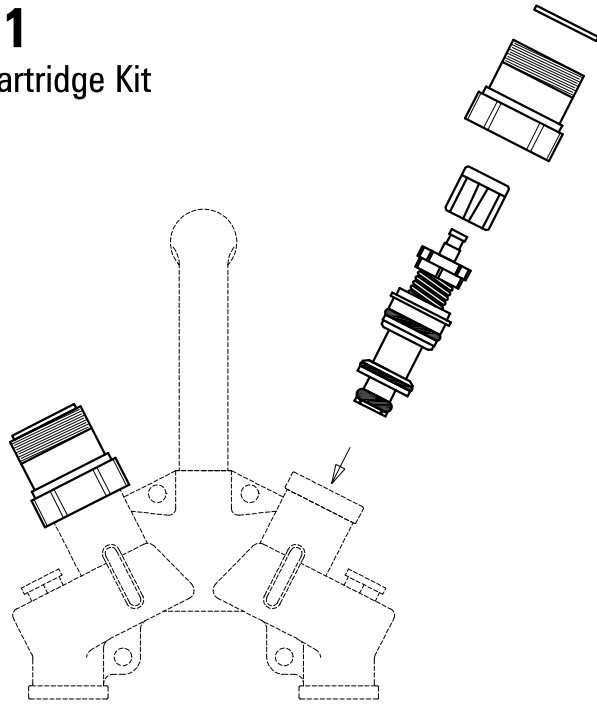
The EXTENDED push button adapter kit (Part No. #20348) is primarily used for lavatory valves. It adapts the existing push button assembly to operate a diaphragm pod which, in turn, operates the #30033S pneumatic cartridge. The kit contains all parts needed to convert either of the two push button types used on the Tempus II valve. The parts list illustrates the two push button types. Parts not required can be discarded.

The CLOSE COUPLED push button adapter kit (Part No. #19777) is primarily used for shower applications where there is adequate access to the back of the panel where the push button is mounted. As with the extended push button adapter kit, parts are included for either of the two push button types used on the Tempus II valve. Unused parts can be discarded after the conversion is made.



19811

Non-Metering Cartridge Kit

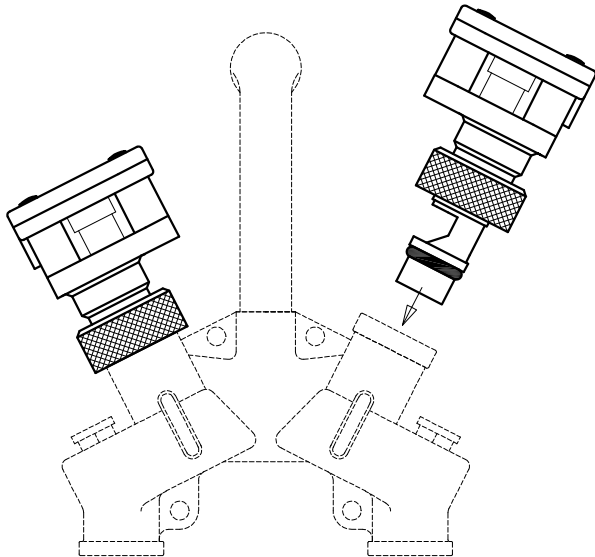


WARNING: Cancer and Reproductive Harm
- www.P65Warnings.ca.gov.

Individual parts are not sold separately.

30033S

Retro-Fit Metering Cartridge



WARNING: Cancer and Reproductive Harm
- www.P65Warnings.ca.gov.

The 30033S pneumatic replacement cartridge is used with pushbutton adapter kits to convert mechanically operated valves to air operated valves.

