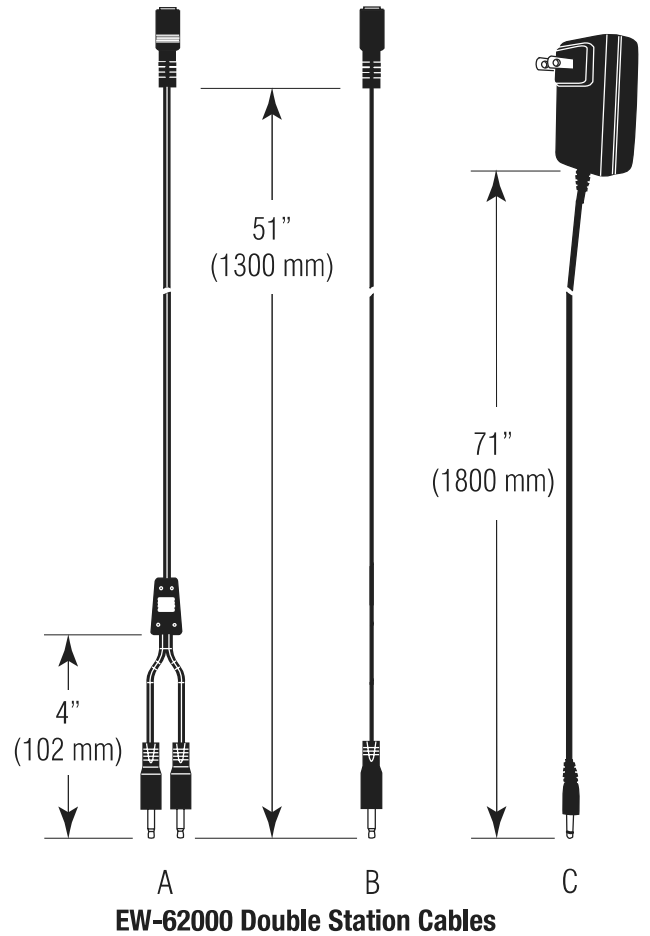
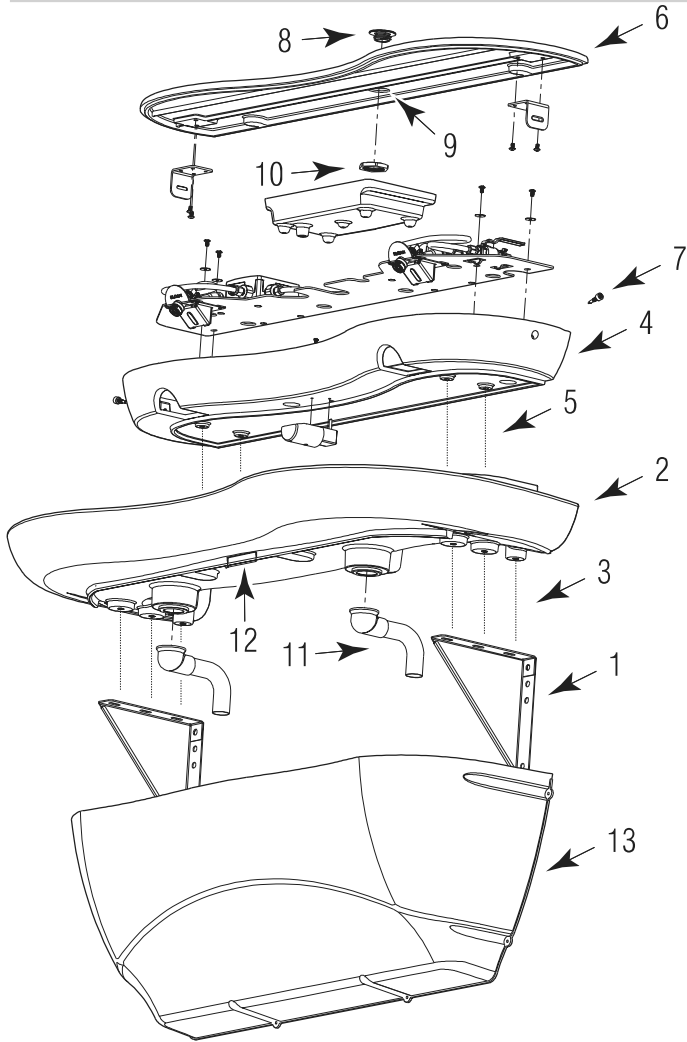


SloanStone® EW-62000 Double Station

Top-Level Assembly



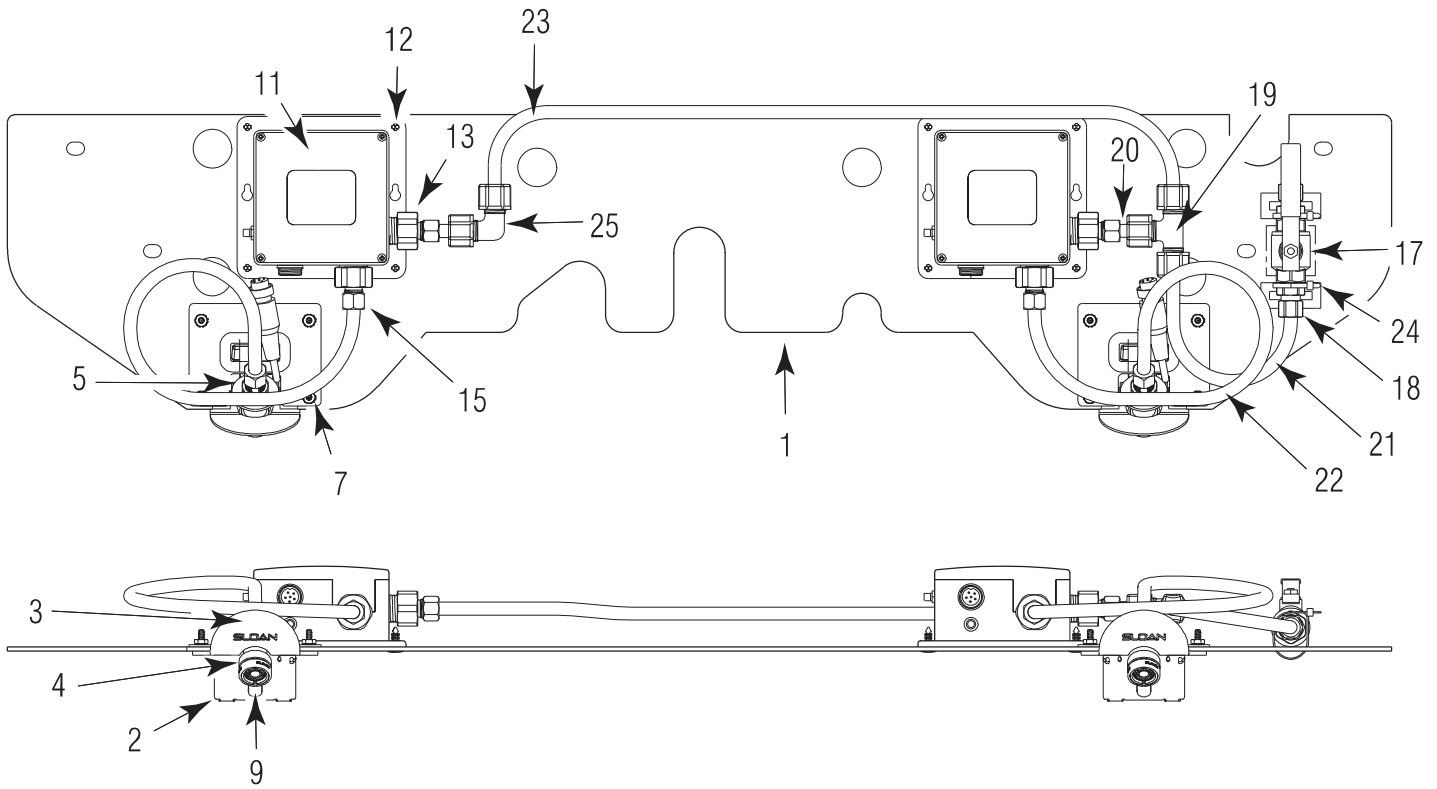
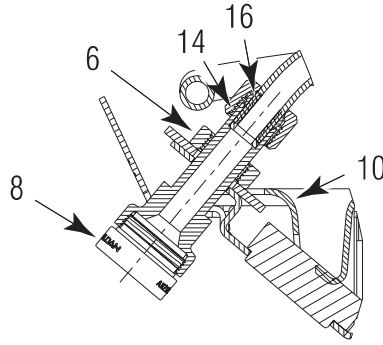
Item No.	Part No.	Description
1	EW-122	Mounting Bracket (2)
2	EW-129	Basin
3	ELC-41	Screw, Machine Truss Head 1/4-20 (6)
4	EW-135-A	Head
†	EW-142-A	Head with Manual Soap Dispenser
5	EW-37	Screw, Truss Head 1/4-20 x 1-1/2" Long (4)
6	EW-130-A	Cover
‡	EW-138-A	Cover with Fill Cap
7	EW-115	Cover Attachment Screw
8 ‡	ESD-241	Fill Cap for Soap Reservoir
9 ‡	ESD-242	Sleeve for Fill Cap
10 ‡	ESD-243	Jam Nut for Fill Cap Sleeve
11	ETF-725-A	Grid Strainer Assembly (2)
12	EW-127	Velcro® Strip (Hook)
13	EW-105	Plastic Cabinet
—	MIX-19	Supply Hose (Not Shown)
—	EW-96	T-Handled Wrench (Not Shown)
—	EW-128	Velcro® Strip (Loop) (Not Shown)
— ‡	ESD-249	Fill Cap Spanner (Not Shown)
—	EW-98	Light Duty Buffing Pad (Not Shown)
—	EW-108	General Purpose Buffing Pad (Not Shown)
†	EW-141	Spacers (Not Shown)

† Included on models with Soap Dispenser

‡ Included on models with Fill Cap

Item No.	Part No.	Description
A	SFP-38	Cable Splitter
B	SFP-37	Cable Extension
C	SFP-36	Transformer

SloanStone® EW-62000 Double Station
Double Station Electronic Components

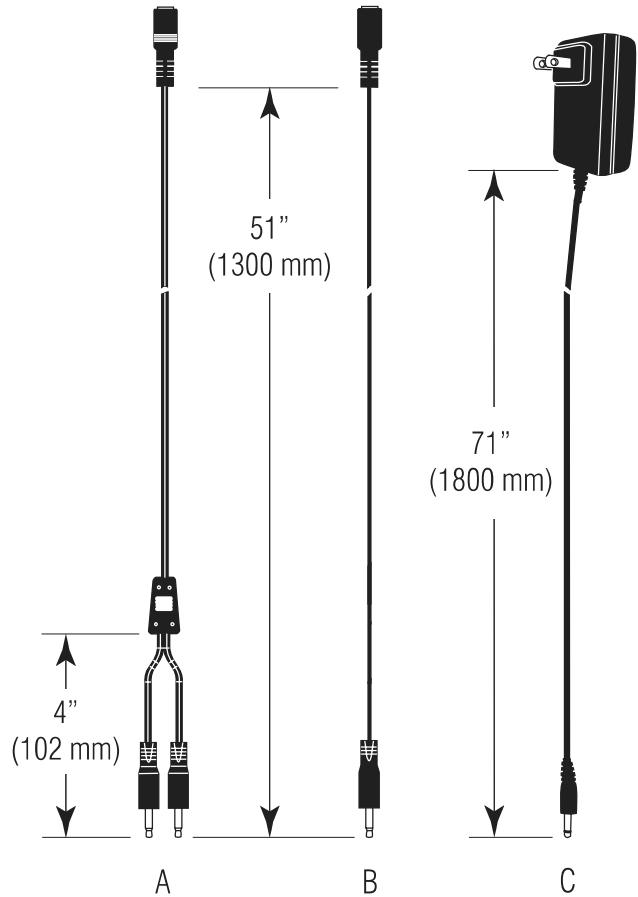
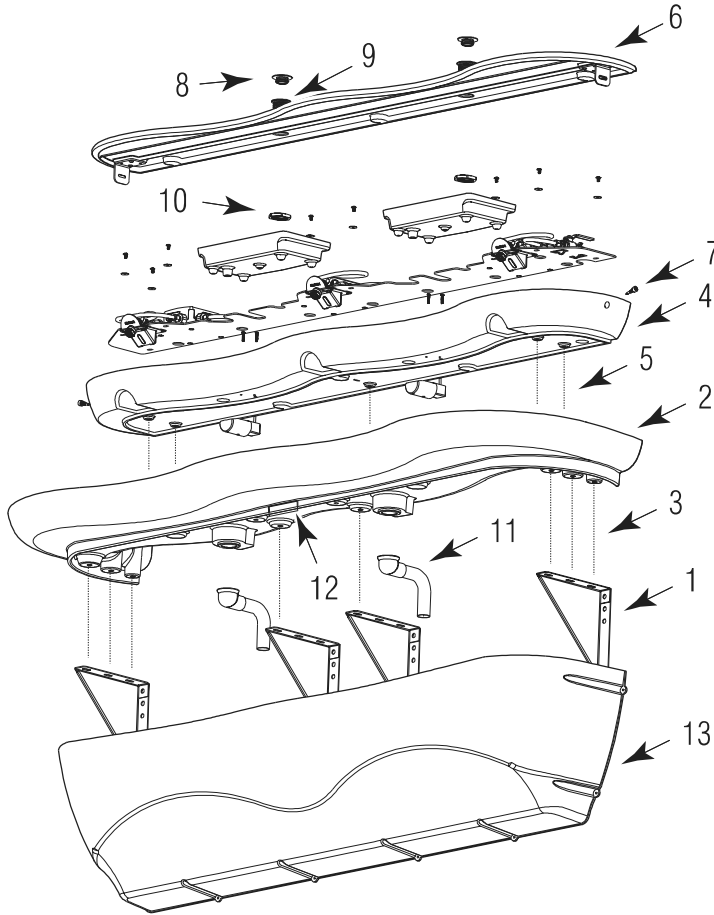


Item No.	Part No.	Description
1	EW-113	Component Mounting Plate, 2 Station
2	EW-119	Sensor Housing
3	EW-100-A	Sensor Base Plate Assembly
4	EW-112	Spout Adapter
5	EW-140	Washer, 9/16"
6	MIX-69	Hex Nut
7	EW-14	Nut #8-32 (KEPS)
8	ETF-723	Spray Head 0.5 gpm (1.9 Lpm) Vandal Proof
9	SFP-41-A	Sensor with Range Adjustment Kit
10	EW-120	Sensor Backing Piece
11	SFP-40	Control Box with Button
12	EW-116	Push-In Clip
13	SFP-45-A	Inlet Adapter Kit

Item No.	Part No.	Description
14	EW-26	Tube Support 3/8"
15	ETF-209	Compression Nut
16	ETF-208	Ferrule
17	EW-118	Shut-Off Valve
18	ETF-61	Male Connector
19	EW-19	Compression Tee Fitting 3/8" Tube
20	EW-89-1	Tube, 3/8" 1.56" (40 mm) Long
21	EW-89-6	Tube, 3/8" 8.19" (208 mm) Long
22	EW-89-7	Tube, 3/8" 17.50" (445 mm) Long
23	EW-89-10	Tube, 3/8" 24.75" (629 mm) Long
24	ETF-198	Tie Wrap
25	EW-18	Compression Elbow Fitting 3/8" Tube
—	ELC-17	Bond Tape (Not Shown)

SloanStone® EW-63000 Triple Station

Top-Level Assembly



EW-63000 Double Station Cables

Item No.	Part No.	Description
1	EW-122	Mounting Bracket (4)
2	EW-134	Basin
3	ELC-41	Screw, Machine Truss Head 1/4-20 (8)
4	EW-136-A	Head
†	EW-143-A	Head with Manual Soap Dispenser
5	EW-37	Screw, Truss Head 1/4-20 x 1-1/2" Long (5)
6	EW-137-A	Cover
‡	EW-139-A	Cover with Fill Cap
7	EW-115	Cover Attachment Screw (2)
8 ‡	ESD-241	Fill Cap for Soap Reservoir
9 ‡	ESD-242	Sleeve for Fill Cap
10 ‡	ESD-243	Jam Nut for Fill Cap Sleeve
11	ETF-725-A	Grid Strainer Assembly (2)
12	EW-127	Velcro® Strip (Hook)
13	EW-123	Plastic Cabinet
—	MIX-19	Supply Hose (Not Shown)
—	EW-96	T-Handled Wrench (Not Shown)
—	EW-128	Velcro® Strip (Loop) (Not Shown)
— ‡	ESD-249	Fill Cap Spanner (Not Shown)
—	EW-98	Light Duty Buffing Pad (Not Shown)
—	EW-108	General Purpose Buffing Pad (Not Shown)
†	EW-141	Spacers (Not Shown)

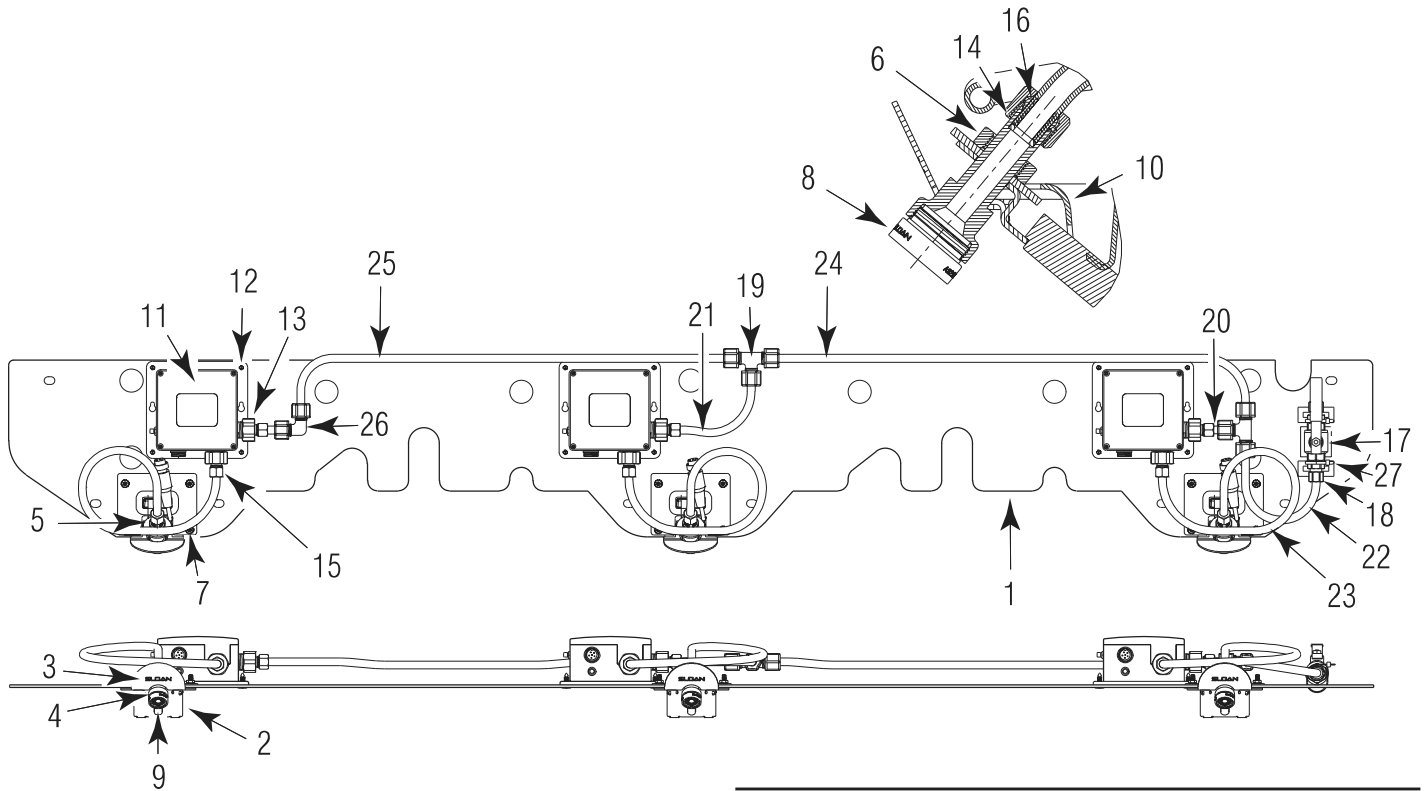
Item No.	Part No.	Description
A	SFP-38	Cable Splitter
B	SFP-37	Cable Extension
C	SFP-36	Transformer

† Included on models with Soap Dispenser

‡ Included on models with Fill Cap

SloanStone® EW-63000 Triple Station

Electronic Components



Item No.	Part No.	Description
1	EW-117	Component Mounting Plate, 3 Station
2	EW-119	Sensor Housing
3	EW-100-A	Sensor Base Plate Assembly
4	EW-112	Spout Adapter
5	EW-140	Washer, 9/16"
6	MIX-69	Hex Nut
7	EW-14	Nut #8-32 (KEPS)
8	ETF-723	Spray Head 0.5 gpm (1.9 Lpm) Vandal Proof
9	SFP-41-A	Sensor with Range Adjustment Kit
10	EW-120	Sensor Backing Piece
11	SFP-40	Control Box with Button
12	EW-116	Push-In Clip
13	SFP-45-A	Inlet Adapter Kit
14	EW-26	Tube Support 3/8"

Item No.	Part No.	Description
15	ETF-209	Compression Nut
16	ETF-208	Ferrule
17	EW-118	Shut-Off Valve
18	ETF-61	Male Connector
19	EW-19	Compression Tee Fitting 3/8" Tube
20	EW-89-1	Tube, 3/8" 1.56" (40 mm) Long
21	EW-89-5	Tube, 3/8" 6.75" (172 mm) Long
22	EW-89-6	Tube, 3/8" 8.19" (208 mm) Long
23	EW-89-7	Tube, 3/8" 17.50" (445 mm) Long
24	EW-89-9	Tube, 3/8" 25.75" (654 mm) Long
25	EW-89-10	Tube, 3/8" 24.75" (629 mm) Long
26	EW-18	Compression Elbow Fitting 3/8" Tube
27	ETF-198	Tie Wrap
—	ELC-17	Bond Tape (Not Shown)

SloanStone® EW-62000/63000**Triple Station Troubleshooting**

1. Faucet delivers water in an uncontrolled manner.

A. Faucet is defective. Contact Sloan Valve Company Installation Engineering Department (see below).

2. Faucet does not deliver any water when Sensor is activated.**INDICATOR: Solenoid valve produces an audible “CLICK.”**

A. Water supply stop(s) closed. Open water supply stop(s).

B. Water strainer in control module is clogged. Close supply stops and remove water inlet line at control module. Remove, clean and reinstall strainer and water inlet line. Replace strainer if required.

INDICATOR: Solenoid valve DOES NOT produce an audible “CLICK.”

A. Batteries low (battery powered models). Replace batteries.

B. Power failure (transformer powered models). Check power supply.

3. Faucet delivers only a slow flow or dribble when Sensor is activated.

A. Water supply stop(s) are partially closed. Completely open water supply stop(s).

B. Water strainer in control module is clogged. Close supply stops and remove water inlet line at control module. Remove, clean and reinstall strainer and water inlet line. Replace strainer if required.

C. Aerator is clogged. Remove, clean, and reinstall aerator. Replace aerator if required.

D. Valve is defective. Contact Sloan Valve Company Installation Engineering Department (see below).

4. Faucet does not stop delivering water or continues to drip after user is no longer detected.

A. Valve is defective. Contact Sloan Valve Company Installation Engineering Department (see below).

5. The water temperature is too hot or too cold when connected to hot and cold supply lines.

A. Mixing Valve is not adjusted properly. Adjust Mixing Valve.

6. Solenoid Valve does not produce an audible “CLICK” after plugging transformer into live receptacle (transformer powered models).

A. Unplug Transformer from receptacle. Wait one minute. Check that all connections to Control Modules are properly made. Plug Transformer back into live receptacle.