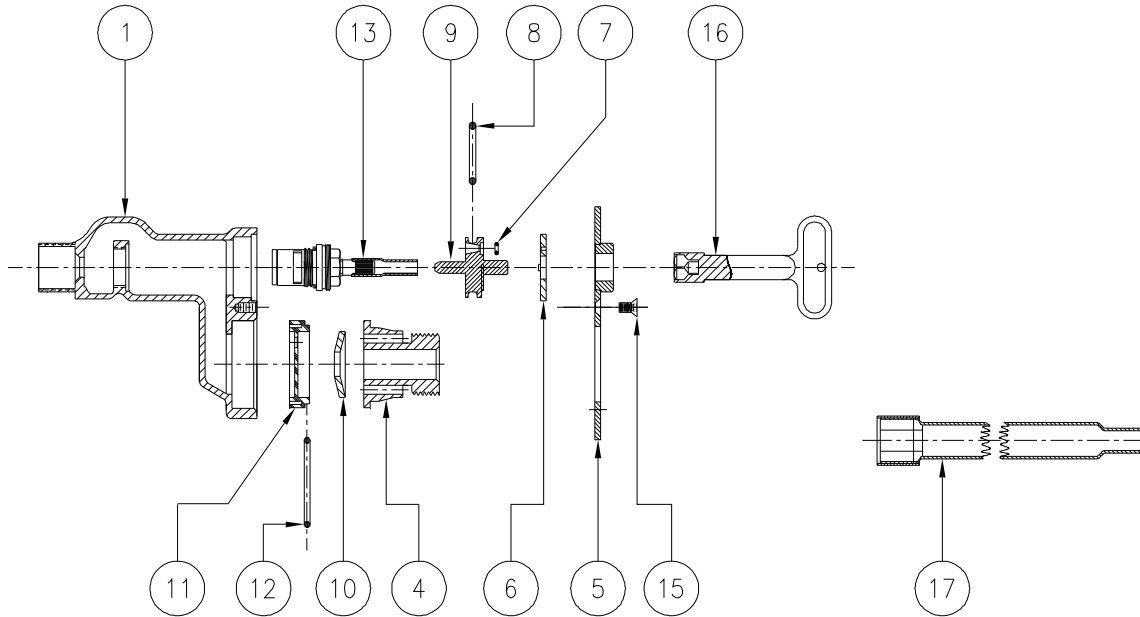
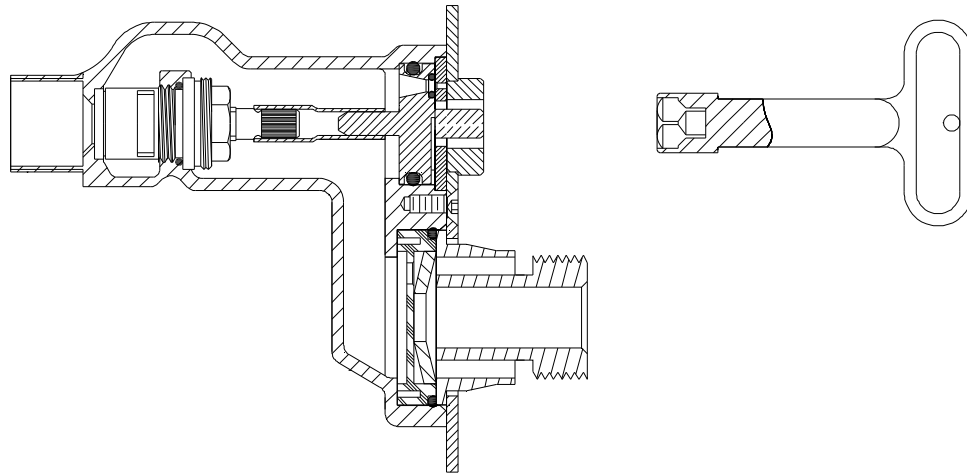




Z1333XL WALL HYDRANT ASSEMBLY



LIST OF MATERIAL			
IT.	QTY	PART NO.	DESCRIPTION
1	1	60703-XL4	HEAD
4	1	50799-XL1	3/4" NOZZLE
5	1	56115-XL8	FACEPLATE
*	6	60228-001	RETAINING WASHER
*	7	23750-232	O-RING
*	8	23750-028	O-RING
*	9	60227-XL2	OPERATING COUPLING
*	10	50785-001	"EQUA-BALANCE" SEAL

LIST OF MATERIAL			
IT.	QTY	PART NO.	DESCRIPTION
11	1	50819-001	DISC
*	12	23750-204	DISC O-RING
13	1	61402-XL1	CARTRIDGE/TUBE ASSEMBLY
15	5	22698-047	FACEPLATE SCREW
*	16	59546-001	KEY
17	1	62078-001	CARTRIDGE WRENCH (OPT)

* ITEMS ARE AVAILABLE IN -RK REPAIR KIT OPTION BAG #66955-340-9.