



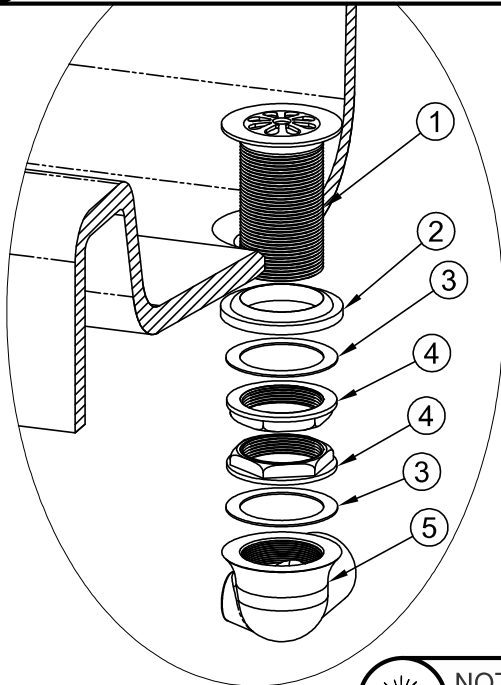
INSTALLATION, OPERATIONS & MAINTENANCE MANUAL

Please visit www.acorneng.com
for most current specifications.

MERIDIAN® 3792



HINT: Teflon tape is recommended on all threaded waste and supply connections.

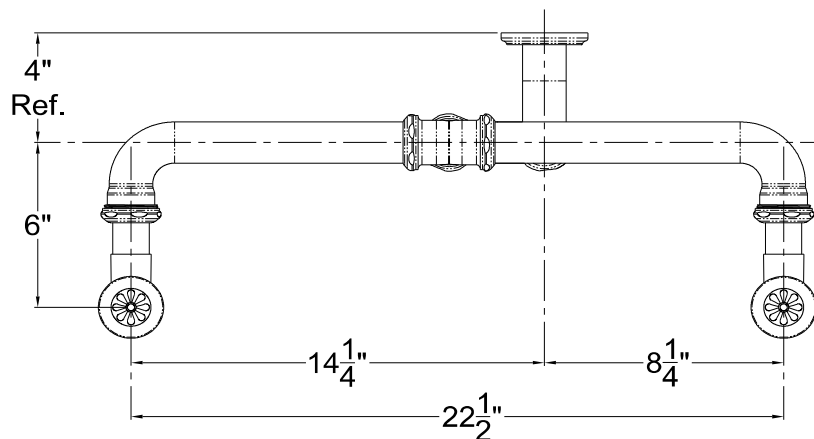


3 Install grid strainer and close elbow to bowl using plumber's putty.

- ① Grid Strainer w/ 1-1/2" -16 UNE Threads
- ② Rubber Gasket
- ③ Flat Fiber Washer
- ④ 1-1/2" -16 UNI Rough Chrome Brass Jam Nut
- ⑤ 1-1/2"-16 x 1-1/4" UNI Close Ell with 3/8" NPT Clean-Out Plug



NOTE: Continuous waste assembly will require field cutting and fitting by the installer.



4 Assemble continuous waste piping using Teflon tape on all threaded connections and make up waste connections to 1-1/2" P-Trap.